



YOKE AND FLANGE MEASUREMENT

Before we build the driveline, we must verify how your drive shaft attaches to the vehicle. **Figure 1 & 2** illustrate how to measure for u-joint series and/or yoke series. **Figure 3** illustrates how to measure the flange pattern (G) and pilot hole (F). These are critical dimensions needed to build your drive shaft. We **MUST** verify these measurements **BEFORE** we quote your price and build.

If you have any questions, please give us a call at 1-866-SHAFT 4 U

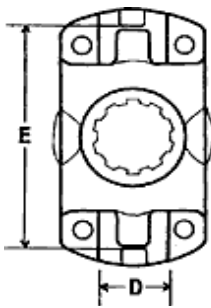


Figure 1

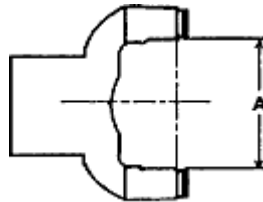


Figure 2

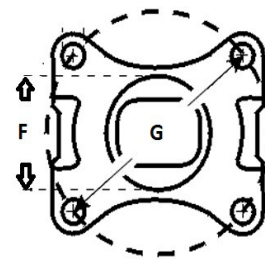


Figure 3

	<u>E</u>	x	<u>D</u>
1310:	3 7/32"	x	1 1/16"
1310B:	3 7/32"	x	1 1/8"
1330:	3 5/8"	x	1 1/16"
1330B:	3 5/8"	x	1 1/8"
1350:	3 5/8"	x	1 3/16"
1410:	4 3/16"	x	1 3/16"
1480:	4 3/16"	x	1 3/8"

<u>CHRYSLER</u>
A= 2 1/8"
A= 2 5/8"
<u>GENERAL MOTORS</u>
A= 2 9/16"

Flange yokes were used by every automaker. There are no set dimensions. F & G dimensions must be verified.

Figure 3: The F dimension is the pilot diameter. The G dimension is the bolt pattern. Depending on the manufacturer, this bolt pattern will either be evenly spaced, or it will be a "rectangle" pattern.

E: _____
D: _____

A: _____

F: _____
G: _____